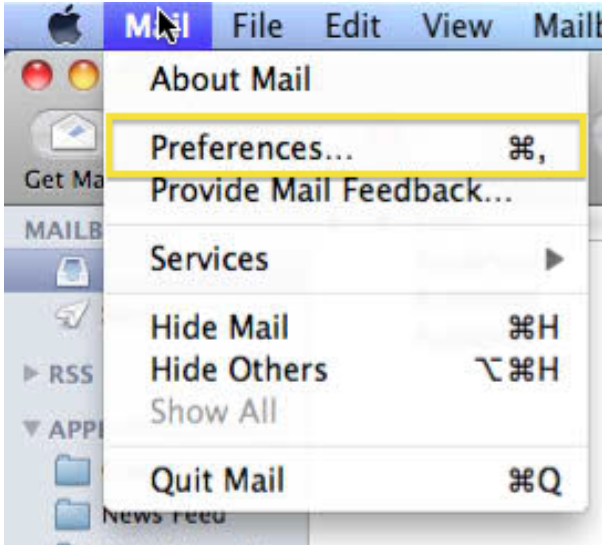


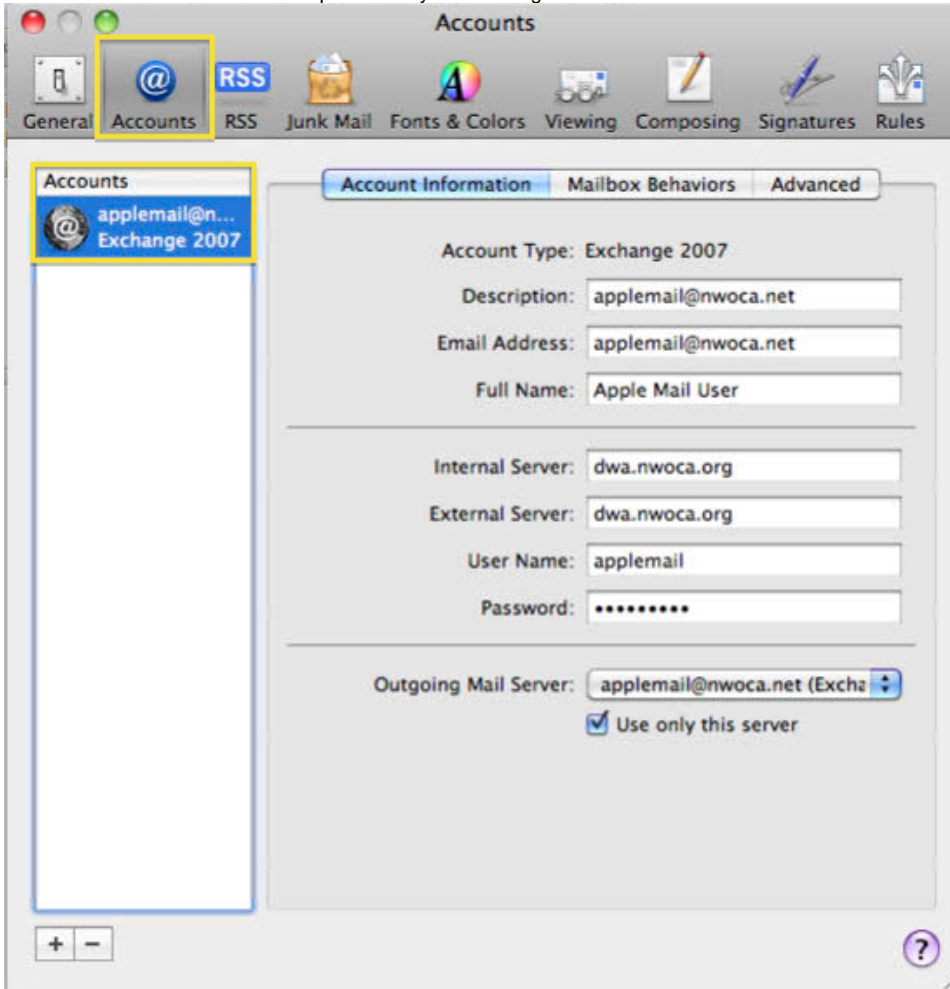
Apple Mail for Mac OS X 10.6

Apple Mail

1. Open Apple Mail
2. Select the Mail menu and then Preferences...



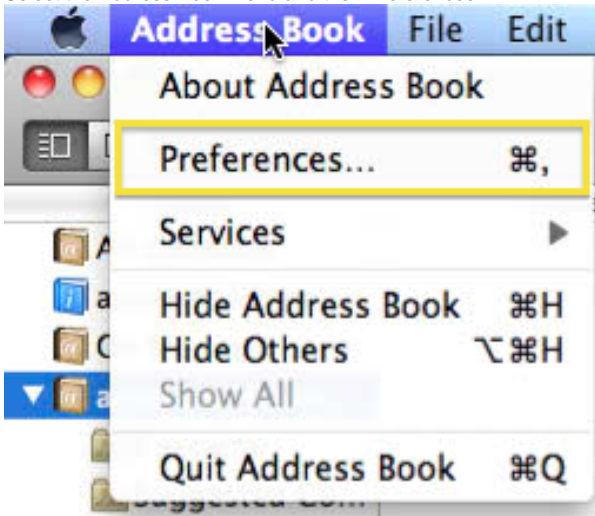
3. Select the Accounts button at the top and then your Exchange Account on the left.



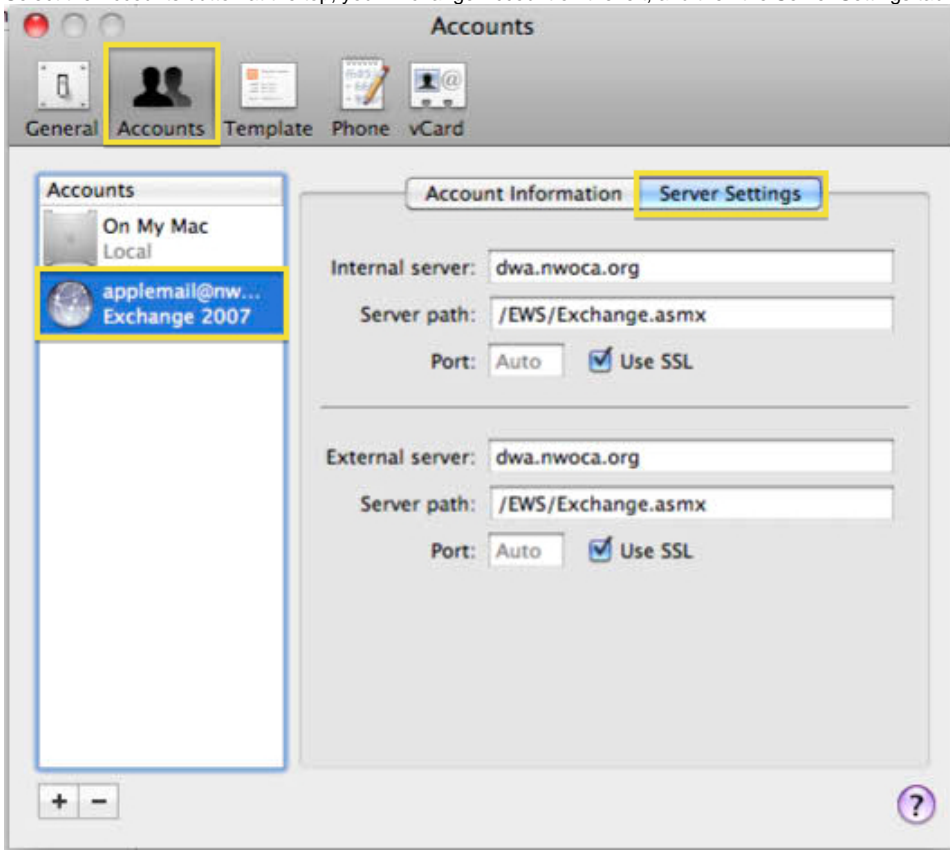
4. Change both the Internal Server and External Server to: **dwa.nwoca.org**

Address Book

1. Open Apple Address Book
2. Select the Address Book menu and then Preferences...



3. Select the Accounts button at the top, your Exchange Account on the left, and then the Server Settings tab on the right.

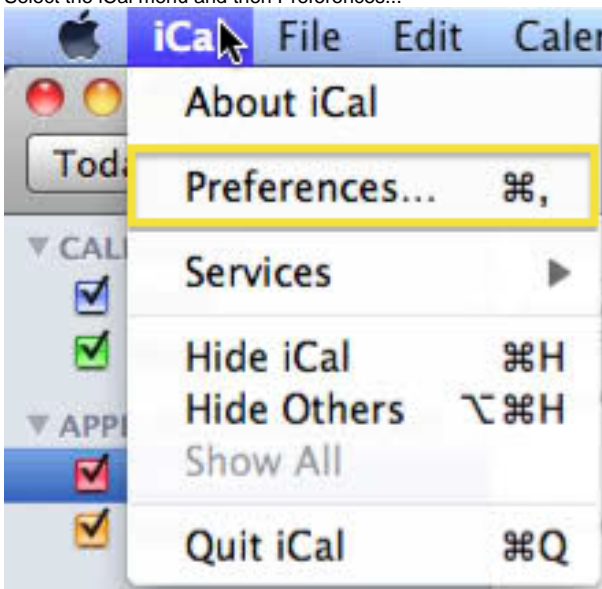


4. Change both the Internal Server and External Server to: **dwa.nwoca.org**

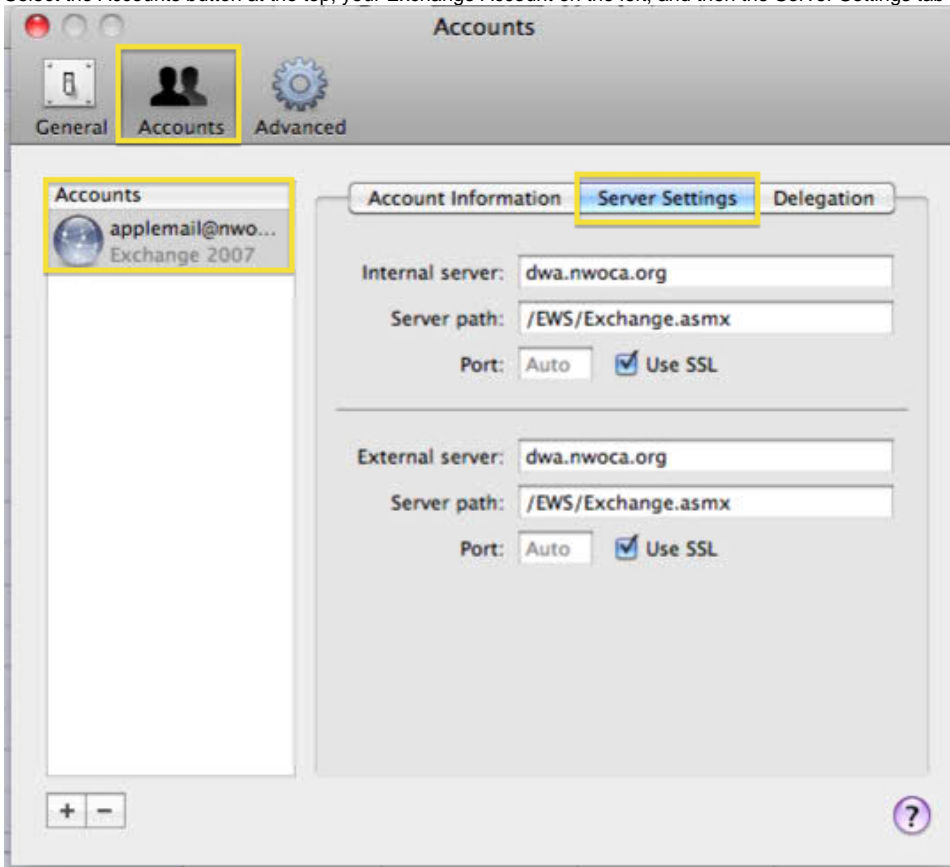
iCal

1. Open Apple iCal

2. Select the iCal menu and then Preferences...



3. Select the Accounts button at the top, your Exchange Account on the left, and then the Server Settings tab on the right.



4. Change both the Internal Server and External Server to: **dwa.nwoca.org**