



**The ART Collection, formerly known as AMICO Library,** provides high-quality, digital images of works of art from museums around the world. Cultures and time periods represented range from contemporary art, Native American and Inuit art, to ancient Greek, Roman and Egyptian works, along with Japanese and Chinese works. The collection contains more than 71,000 digitized including paintings, photographs and prints. Other types of works include sculpture, textiles and works of decorative art. Ohio K-12 students and teachers are authorized to use **The ART Collection** for individual educational and research purposes.

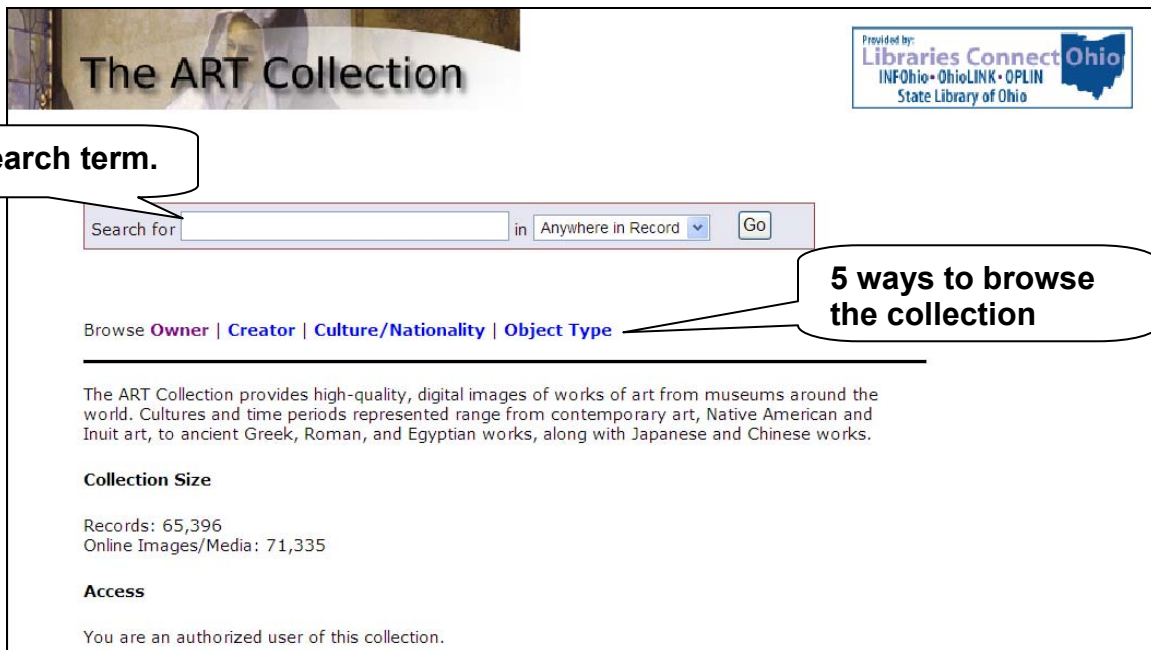
Use **The ART Collection** for:

- **Art** – Images span a wide range of time periods, cultures and media. Images can be printed or otherwise used in projects and research papers.
- **Social Studies** – The artifacts of past civilizations can be studied from your computer.
- **Foreign Language** – Locate works by creator nationality as part of cultural appreciation.

To enter the resource, start from the INFOhio home page, <http://www.infohio.org>.

- Click on *Resources for Grades 9-12* or *Core Collection*.
- Click **The ART Collection** button.
- If necessary, enter your username and password.

## BASIC SEARCH SCREEN



The screenshot shows the search interface for The ART Collection. At the top left is the title "The ART Collection" with a background image of a classical painting. To the right is a logo for "Libraries Connect Ohio" provided by INFOhio, OhioLINK, OPLIN, and the State Library of Ohio. Below the title is a search bar with the text "Search for" followed by an input field, a dropdown menu set to "Anywhere in Record", and a "Go" button. A callout bubble points to the input field with the text "Enter search term." Below the search bar are five links: "Browse Owner | Creator | Culture/Nationality | Object Type". A callout bubble points to these links with the text "5 ways to browse the collection". Below the links is a paragraph of introductory text: "The ART Collection provides high-quality, digital images of works of art from museums around the world. Cultures and time periods represented range from contemporary art, Native American and Inuit art, to ancient Greek, Roman, and Egyptian works, along with Japanese and Chinese works." Underneath this is a section titled "Collection Size" with the following data: "Records: 65,396" and "Online Images/Media: 71,335". Below that is a section titled "Access" with the text: "You are an authorized user of this collection."

## RESULTS LIST

### The ART Collection

Provided by:  
Libraries Connect Ohio  
INFOhio • OhioLINK • OPLIN  
State Library of Ohio

Sort By:  
none

Results: 1 to 18 of 18 hits

Thumbnails    Thumbnails & Text    Text Only



The Art Collection  
Monet, Claude  
Old Fort at Antibes II  
1888



The Art Collection  
Monet, Claude  
Old Fort at Antibes I  
1888



The Art Collection  
Monet, Claude  
Antibes Seen from the  
Plateau Notre-Dame  
1888



The Art Collection  
Monet, Claude  
Cap d'Antibes, Mistral  
1888



The Art Collection  
Monet, Claude  
Maison de Jardinier à  
Antibes  
1888



The Art Collection  
Pater, Jean-Baptiste  
Joseph  
Dancers in  
1720s

Select full-image  
for use in reports  
and projects

### ITEM RECORD

| [back to results](#) << [previous item](#) | [next item](#) >>

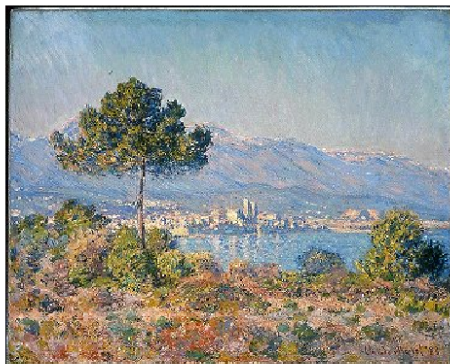
full-image    description    other views

Antibes Seen from the Plateau Notre-Dame; Monet, Claude; Museum of Fine Arts, Boston; 1888 (BMFA.39.672)



Select a zoom  
option by  
clicking on the  
+ or - icon

Zoom  
Options



Select Description for  
more information  
including creation date,  
owner, materials,  
measurements and more.

### Where to get additional help for *The ART Collection*:

- On the INFOhio Web site, <http://www.infohio.org>



**The ART Collection.** Online image collection of paintings, sculptures, drawings, photographs, textiles, costumes, jewelry and more, from earliest times to the present.



Click for  
help!

- Your school's library media specialist

**The ART Collection** is brought to you by Libraries Connect Ohio, INFOhio working with Ohio's other library networks, OhioLINK and OPLIN. Access to this resource is funded in part through an Institute of Museum and Library Services LSTA grant awarded by the State Library of Ohio. The content does not necessarily reflect the position or policy of the granting agencies.